



19th May 2015

Jenny Mewing
Strategic Planner - Rezoning
Wyong Shire Council
PO Box 20
WYONG NSW 2259

Emailed: JLMewing@wyong.nsw.gov.au

Your Reference: (RZ/12/2014; PP_2015_WYONG_002_00)
Our Reference (TRIM):OUT15/8741

Dear Ms Mewing

**Re: Request for Agency Comment - Planning Proposal in Respect of Lot 642
DP 1027231, Lake Munmorah, Lot 644 DP 1027231 and Lot 100 DP 1044282,
Crangan Bay (RZ/12/2014)PP_2015_WYONG_002_00)**

Thank you for the opportunity to provide advice on the above matter. This is a response from NSW Trade & Investment – Geological Survey of New South Wales (GSNSW).

Coal and Petroleum Issues

The subject site is located within the Newcastle Coalfield and overlies consolidated coal leases CCL706, held by LakeCoal Pty Ltd (Chain Valley Colliery), and CCL719, held by Centennial Mannering Pty Ltd (Mannering Colliery, now on care and maintenance). Due to issues with access, surface constraints and coal quality, the planning proposal is not considered likely to sterilise potentially minable coal resources.

The site is also partially covered by petroleum exploration license PEL461 held by Dart Energy (Apollo) Pty Ltd. Given the extent of the existing residential exclusion zones and conservation areas, the rezoning is not considered likely to impact on the titleholder's ability to explore this title.

GSNSW notes the Mine Subsidence Board have been consulted regarding this proposal.

Extractive Resources Issues

The Planning Proposal identifies the subject lots as partially within the Transition Area of Crangan Bay Quarry, as mapped under the Wyong Shire Mineral Resource Audit (MRA), conducted in accordance with Section 117(2) Direction 1.3 – Mining, Petroleum Production and Extractive Industries under the *Environmental Planning & Assessment Act 1979*.

Transition Areas are an indicative area which is adjacently surrounding an MRA identified resource area. They indicate the area around an identified resource (in this case an operating quarry) which may possibly be impacted (by such factors as noise, vibration, dust, traffic, etc) from potential activities associated with the operation. Crangan Bay Quarry utilises blasting methods, and as such a 1000m transition area has been determined.

GSNSW generally does not support intensification of residential development within quarry transition zones however each application should be considered on its individual merits. Council would need to satisfy itself that concerns regarding potential land use conflict are satisfactorily addressed. GSNSW understands the planning proposal intends for a Land Use Compatibility be undertaken to address inconsistencies with Ministerial Section 117 Direction 1.3 – Mining, Petroleum Production and Extractive Industries, and recommend further consultation with GSNSW regarding this proposal.

Geoscience Information Services

The GSNSW has a range of online data available on line through the following website address:

<http://www.resources.nsw.gov.au/geological/online-services>

This site hosts a range of data to enable research into exploration, land use and general geoscience topics. Additionally, the location of exploration and mining titles in NSW may be accessed by the general public using the following online utilities:

1. **MinView** allows on-line interactive display and query of exploration tenement information and geoscience data. It allows spatial selection, display and download of geological coverages, mineral deposits and mine locations, geophysical survey boundaries, drillhole locations, historical and current exploration title boundaries and other spatial datasets of New South Wales. This online service is available at:
<http://www.resources.nsw.gov.au/geological/online-services/minview>
2. **NSW Titles** enables the public to access and view frequently updated titles mapping information across NSW. This online service is available at:
<http://nswtitles.minerals.nsw.gov.au/nswtitles/>

Queries regarding the above information, and future requests for advice in relation to this matter, should be directed to the GSNSW Land Use team at landuse.minerals@trade.nsw.gov.au.

Yours sincerely



Cressida Gilmore
Team Leader - Land Use



22nd June 2015

Jenny Mewing
Strategic Planner - Rezoning
Wyong Shire Council
PO Box 20
WYONG NSW 2259

Emailed: JLMewing@wyong.nsw.gov.au

Your Reference: (RZ/12/2014; PP_2015_WYONG_002_00)
Our Reference (TRIM):OUT15/15316

Dear Ms Mewing

Re: Revised Coal advice - Planning Proposal in Respect of Lot 642 DP 1027231, Lake Munmorah, Lot 644 DP 1027231 and Lot 100 DP 1044282, Crangan Bay (RZ/12/2014)PP_2015_WYONG_002_00)

Thank you for the opportunity to provide advice on the above matter. This is a response from NSW Trade & Investment – Geological Survey of New South Wales (GSNSW).

Coal and Petroleum Issues

GSNSW have previously provided advice on the proposal by Wyong Council to rezone some areas of the subject site (Lot 642 DP 1027231, Lot 644 DP 1027231 and Lot 100 DP 1044282) in our formal Division of Resources & Energy (DRE) response (OUT15/8741, 19/5/2015).

Council have subsequently informed DRE that our advice conflicts with that of the Mine Subsidence Board on this matter. As a result, the Coal & Petroleum Geoscience Unit of GSNSW have undertaken further resource assessment work and discussion with titleholders in order to better understand the future coal resource prospectivity of this site, and this portion of the Newcastle Coalfield generally.

Previous advice from GSNSW stated that we did not consider it likely that potentially mineable coal resources would be sterilised by the planning proposal, due to issues with access, surface constraints and coal quality.

Information suggests that whilst access to the coal resources in this area from the Centennial Mannering workings is problematic, that is not necessarily the case from the workings to the north in the Chain Valley Colliery holdings. Chain Valley (LakeCoal Pty Ltd) are actively exploring this area within consolidated coal leases CCL706 and CCL707, and also through subleasing arrangements with Centennial Coal that include CCL719.

LakeCoal also have a pending exploration licence application (ELA4986) approximately 80 metres east of the subject site. This portion of the Newcastle Coalfield has historically been mined within the Wallarah, Great Northern and Fassifern Seams, and these remain prospective within and below the subject area.

Given the potential mineability of multiple coal seams in this area, and that access restrictions to this resources are not considered insurmountable, GSNSW would prefer to see residential development occur only after mining has taken place. As such GSNSW has revised its position and does not support the rezoning of this site at this time.

Extractive Resources Issues

Extractive Resources advice provided in OUT15/8741 (19/5/2015) remains unchanged and is provided below for reference.

The Planning Proposal identifies the subject lots as partially within the Transition Area of Crangan Bay Quarry, as mapped under the Wyong Shire Mineral Resource Audit (MRA), conducted in accordance with Section 117(2) Direction 1.3 – Mining, Petroleum Production and Extractive Industries under the *Environmental Planning & Assessment Act 1979*.

Transition Areas are an indicative area which is adjacently surrounding an MRA identified resource area. They indicate the area around an identified resource (in this case an operating quarry) which may possibly be impacted (by such factors as noise, vibration, dust, traffic, etc) from potential activities associated with the operation. Crangan Bay Quarry utilises blasting methods, and as such a 1000m transition area has been determined.

GSNSW generally does not support intensification of residential development within quarry transition zones however each application should be considered on its individual merits. Council would need to satisfy itself that concerns regarding potential land use conflict are satisfactorily addressed. GSNSW understands the planning proposal intends for a Land Use Compatibility be undertaken to address inconsistencies with Ministerial Section 117 Direction 1.3 – Mining, Petroleum Production and Extractive Industries, and recommend further consultation with GSNSW regarding this proposal.

Geoscience Information Services

The GSNSW has a range of online data available on line through the following website address:

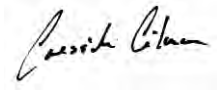
<http://www.resources.nsw.gov.au/geological/online-services>

This site hosts a range of data to enable research into exploration, land use and general geoscience topics. Additionally, the location of exploration and mining titles in NSW may be accessed by the general public using the following online utilities:

1. **MinView** allows on-line interactive display and query of exploration tenement information and geoscience data. It allows spatial selection, display and download of geological coverages, mineral deposits and mine locations, geophysical survey boundaries, drillhole locations, historical and current exploration title boundaries and other spatial datasets of New South Wales. This online service is available at:
<http://www.resources.nsw.gov.au/geological/online-services/minview>
2. **NSW Titles** enables the public to access and view frequently updated titles mapping information across NSW. This online service is available at:
<http://nswtitles.minerals.nsw.gov.au/nswtitles/>

Queries regarding the above information, and future requests for advice in relation to this matter, should be directed to the GSNSW Land Use team at landuse.minerals@trade.nsw.gov.au.

Yours sincerely

A handwritten signature in black ink, appearing to read 'Cressida Gilmore', is positioned above the printed name.

Cressida Gilmore
Team Leader - Land Use

14/02/2018

Jenny Mewing
Principal Strategic Planner
Central Coast Council
PO Box 20
Wyang NSW 2259

Our Reference: OUT18/1942

Emailed: jenny.mewing@centralcoast.nsw.gov.au

Dear Ms Mewing,

Re: Confirmation of Currency of Advice – Lake Munmorah/Crangan Bay (Planning Proposal RZ/12/2014)

Thank you for the opportunity to provide advice on the above matter. This is a response from the NSW Department of Planning & Environment – Division of Resources & Geoscience, Geological Survey of New South Wales (GSNSW).

Specific Issues

GSNSW has responded to a number of referrals for advice regarding Planning Proposal RZ/12/2014 between May and December of 2015 with the most recent response to Wyong Shire Council (OUT15/34963) supporting a partial rezoning over the western area which no longer holds an economic coal resource. GSNSW confirms that advice in the aforementioned response remains current.

The unchanged limits of the area for which rezoning is supported is in the attached map. Rezoning is not supported by GSNSW in the remainder of the proposal area. The Branch's position provided on this matter is to facilitate ongoing access to economic coal resources which are yet to be extracted in the subject area.

Geoscience Information Services

The GSNSW has a range of online data related to mineral exploration, land use and general geoscience topics:

<http://www.resources.nsw.gov.au/geological/online-services>

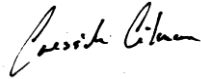
The location of current exploration and mining titles in NSW, explanations of mining and production titles and the roles of community and government in the decision making process for mining/resource projects may be accessed by the general public using the following online utilities:

<http://commonground.nsw.gov.au>

<https://www.resourcesandenergy.nsw.gov.au/miners-and-explorers/geoscience-information/services/online-services/minview>

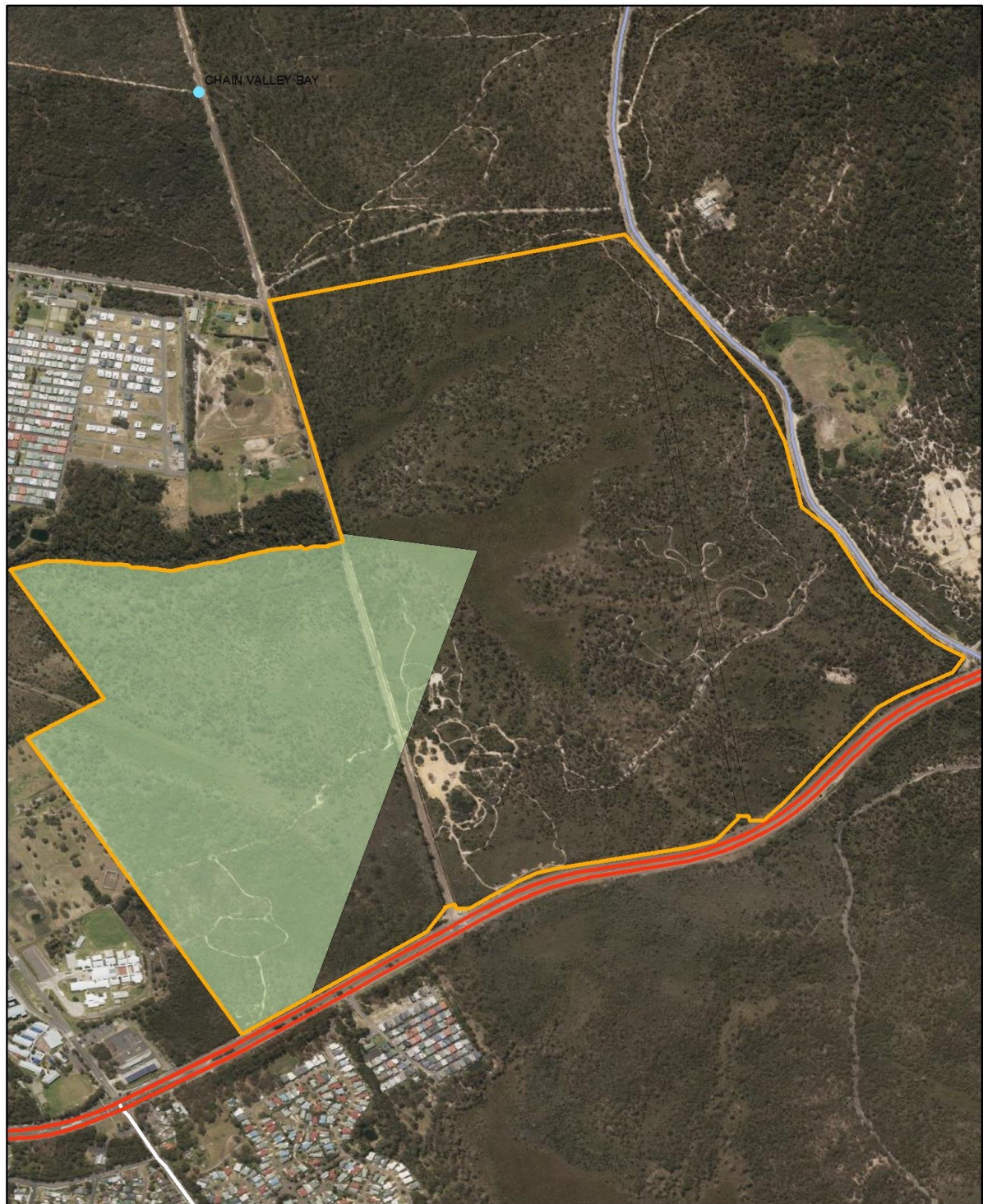
Queries regarding the above information, and future requests for advice in relation to this matter, should be directed to the GSNSW Land Use team at landuse.minerals@industry.nsw.gov.au.

Yours sincerely

A handwritten signature in black ink, appearing to read 'Cressida Gilmore', written in a cursive style.

Cressida Gilmore
Manager - Land Use

Figure 1. Locality map and area of rezoning support.



Legend

- Rezoning Supported
- Proposal Area
- Pacific Highway



**Planning &
Environment**
Resources & Geoscience



0 0.175 0.35
Kilometres

© State of New South Wales through NSW Department of Planning & Environment – Division of Resources & Geoscience 2017. You must obtain permission from the Department to copy, distribute, display or store in electronic form, any part of this publication, except as permitted under the Copyright Act 1969 (Cwlth).

DISCLAIMER

The information in these materials is protected by copyright, and is confidential until the time that Department of Planning & Environment publishes that information. The recipient is not permitted to use, disclose or reproduce the information in these materials except for land use and planning purposes. Any unauthorised use, copying or reproduction without obtaining the relevant permissions from the Department will constitute an infringement of copyright. The information contained in this publication is based on knowledge and understanding at time of writing (January 2018). The Department excludes all liability for the accuracy or completeness of the information, or for any injury, loss, or damage whatsoever (including without limitation liability for negligence and consequential losses) suffered by any person acting, or purporting to act, in reliance upon anything contained herein. Users rely on and use this information at their own risk.